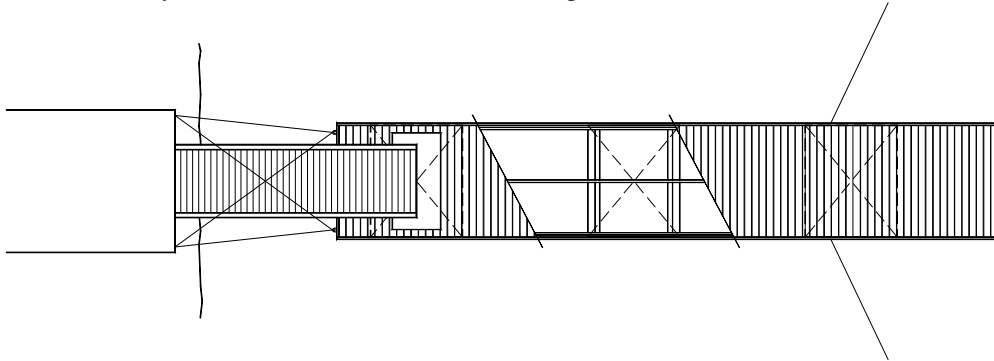


## WOODEN PONTOONS/CONCRETE FLOATS TYPE SF 31

A wooden pontoon/concrete float from **SF MARINA** is a very cost-effective alternative. It combines the flexibility of a wooden pontoon with the weight of a concrete pontoon. This pontoon consist of a sturdy superstructure of pressure-treated wood over floats of steel-fibre reinforced construction. The concrete and styrofoam construction of the float makes the pontoon virtually unsinkable.

The decking is planed wood. It can be built to required length without visible joints. Pontoon type 31 is very suitable for harsh climate and can withstand being frozen-in during Winter. Normally, the pontoon would be moored using chains and blocks. As an alternative it could be connected to piles. Options: Bankirai deck (Hard wood)



### DATA TYPE 31

**Floats:**

Dimensions: 2.3 x 1.9 x 0.65 m.  
2,9 x 2,3 x 0,65 m

Weight: 1050 kg or 1400kg

Concrete: K40, Air 6%, Vct ≤0.4.

Reinforcement: Galvanised steel-fibres Ks 400.

Styrofoam: 15 kg/m<sup>3</sup>

Cast in materials hot-dipped galvanised steel M24 bolt.

**Wooden superstructure:**

Width 2.0, 2.4 or 3.0 m

Pressure treated pine.

Main beams: 5 or 6 units 70 x 145 mm.

Decking: 34 x 145 mm. Pressure treaded pine  
or 21 x 145 mm. Bankirai (Hard wood) option

Edge fender: 45 x 145 mm.

Bolts and fittings are hot-dipped galvanised steel.

Other dimensions can be offered upon request. Rights reserved for alterations.

